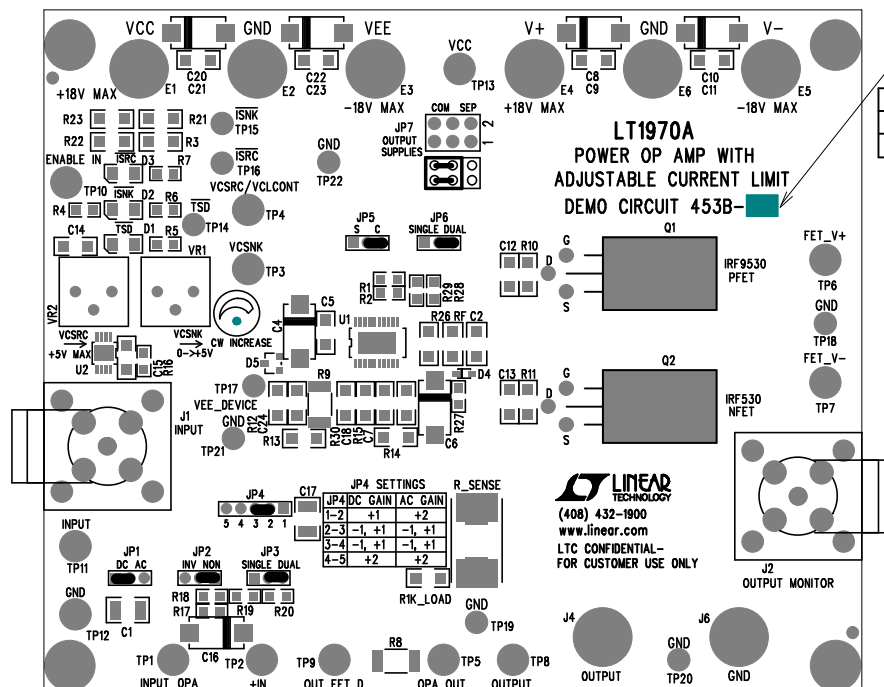


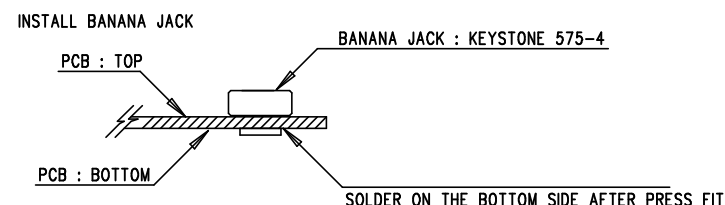
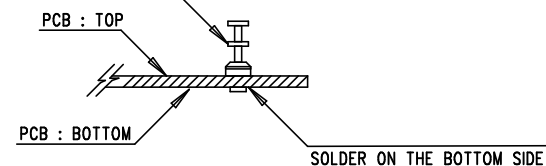
REVISION HISTORY

ECO	REV	DESCRIPTION	APP. ENG.	DATE
-	1	PRODUCTION	TIM R.	11-28-12

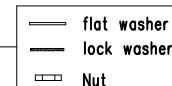
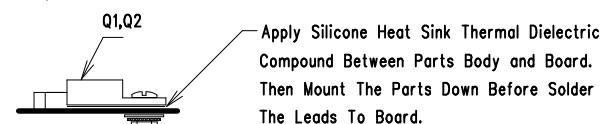


ASSY	R9,R10,R11	R8	R12,R14	Q1,Q2	R_SENSE	C12,C13	R13,R15	R3,R21,R22,R23
-A	0 JUMPER	NOT INSTALL	NOT INSTALL	NOT INSTALL	1 OHM>=0.5W	NOT INSTALL	0 JUMPER	NOT INSTALL
-B	100	INSTALLED	NOT INSTALL	INSTALLED	0.1 OHM>=0.3W	INSTALLED	0 JUMPER	NOT INSTALL

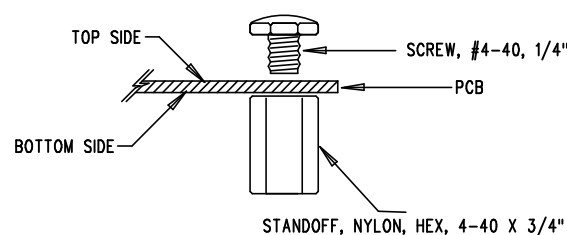
INSTALL 22 TURRETS
TURRETS : TP1-TP13, MILL-MAX 2501-2; TP14-TP22, MILL-MAX 2308



INSTALL Q1,Q2



INSTALL 4 STANDOFFS AT 4 LOCATIONS AS SHOWN BELOW:



TOP SILKSCREEN
LINEAR TECHNOLOGY DATE: 11-28-12
DC453B * LT1970A
POWER OP AMP WITH ADJUSTABLE CURRENT LIMIT

NOTES: UNLESS OTHERWISE SPECIFIED

- WORKMANSHIP SHALL BE IN ACCORDANCE WITH IPC-A-610.
- ASSEMBLY PROCESS SHALL INCLUDE: REFLOW SOLDER TOP SIDE SMD. MAXIMUM SOLDER TEMPERATURE IS 240 DEGREES CELSIUS.
- PARTS TO OMIT WILL BE SPECIFIED ON THE BILL OF MATERIALS. LOCATIONS OF OMITTED PARTS SHALL BE FREE OF SOLDER. MASK THE SOLDER STENCIL WHERE SMT PARTS ARE OMITTED.
- INSTALL SHUNTS AS SHOWN ON ASSY DRAWING.

JP1 : DC	JP2 : NON
JP3 : DUAL	JP4 : 2-3
JP5 : C	JP6 : DUAL
- DEPANELIZE BOARDS AFTER ASSEMBLY AND ROUTE-OUT THE BREAKOUT TABS ON FOUR SIDES OF THE BOARD EDGE.
- DO NOT APPLY ANY KIND OF ASSEMBLY STAMP OR QA STAMP TO ANY BOARD.

APPROVALS

PCB DES.	AK
APP ENG.	TIM R.
SCALE = NONE	



1630 MCCARTHY BLVD
MILPITAS, CA 95035
PH: (408)432-1900
www.linear.com
LTC CONFIDENTIAL-
FOR CUSTOMER USE ONLY

TITLE: TOP ASSEMBLY DRAWING
POWER OP AMP WITH
ADJUSTABLE CURRENT LIMIT

SIZE N/A	IC NO. LT1970A DEMO CIRCUIT 453B	REV. 1
FILENAME: DC453B-1.PCB	SHT 1 OF 1	